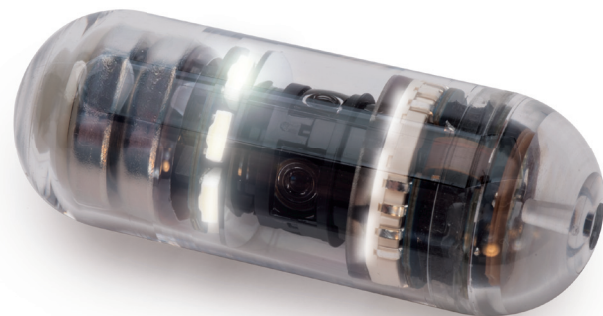




See More. Diagnose Smarter.

Experience the **360° difference**
with CapsoCam Plus®

With higher resolution and double the memory, CapsoCam Plus provides the most comprehensive imaging available today. Now, CapsoCam Plus is the only capsule endoscopy system that is cleared for patients 2 years and above.



CapsoCam Plus: By the Numbers

- 221,184 pixel CMOS sensor
- 1 GB storage memory
- 4 ultra-compact wide angle cameras
- 360° panoramic view
- 5 FPS/camera maximum
- 16 independently controlled LEDs
- 15+ hours of battery life (typical)

"On the basis of the CapsoCam, which imaged the distal small bowel, we found traces of Crohn's disease, which changed the patient management completely."

Dr. Simon Anderson
Consultant Physician and Gastroenterologist,
St. Thomas Hospital, London, UK

Break Free from Restrictive Receiver Equipment

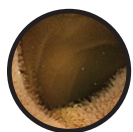
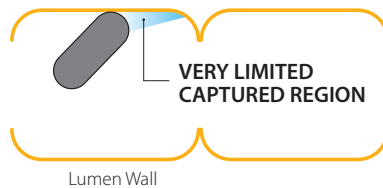
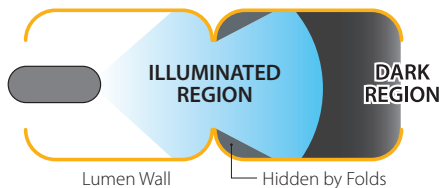
CapsoCam Plus uses a large-capacity on-board storage system that completely eliminates the need for external receiver equipment. This wire-free storage design makes capsule administration faster and easier, while eliminating the risks associated with radio frequency (RF) signals. Benefits of the CapsoCam Plus wire-free design include:

- Zero capital investment or maintenance costs
- Safe for patients with electronic implants
- Increased operational efficiency
- Reduced physician/nurse procedure room time
- No scheduling bottlenecks

What You See Is What You Get

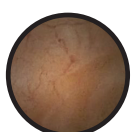
End-facing cameras only provide a limited view of the mucosa. Tumbling, incomplete illumination, and mucosal folds can further limit the value of an axial view capsule endoscope.

Disadvantages of an End-Facing Camera



TUNNEL PATTERN

Limiting depth of view causes dark regions where it is hard to see.



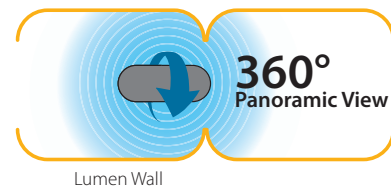
WALL PATTERN

Capsule is pressed against wall resulting in very small region being captured.

CapsoCam Plus overcomes these barriers by using four laterally oriented cameras to provide a full 360° panoramic image of the mucosa.

A recent study revealed 21% higher lesion detection compared to the leading end-facing camera.¹

The CapsoCam Plus Advantage



CapsoCam Plus 360° panoramic view of mucosa.

"We've compared it with the front-view capsules, and we have a better result with CapsoCam."

Dr. Thomas Pachofszky

Medizinische Abteilung mit Gastroenterologie, Hepatologie und Zentralendoskopie, KA Rudolfstiftung, Vienna, Austria



capsovision.com



The CapsoCam Plus video capsule system is intended for visualization of the small bowel mucosa in patients ages 2 and above. It may be used as a tool in the detection of abnormalities of the small bowel.

To learn more or to set up a demonstration, contact your local CapsoCam representative.

Information contained in this leaflet is for use outside the United States only.

¹Saurin JC, Pioche M, Vanbervliet G, et al. Prospective randomized comparison between axial-and lateral capsule endoscopy systems in patients with obscure digestive bleeding. *Endoscopy*. 2014; 46(06): 479-484.

©2017 CapsoVision, Inc., All rights reserved. ADV-2553 Rev C 10/17